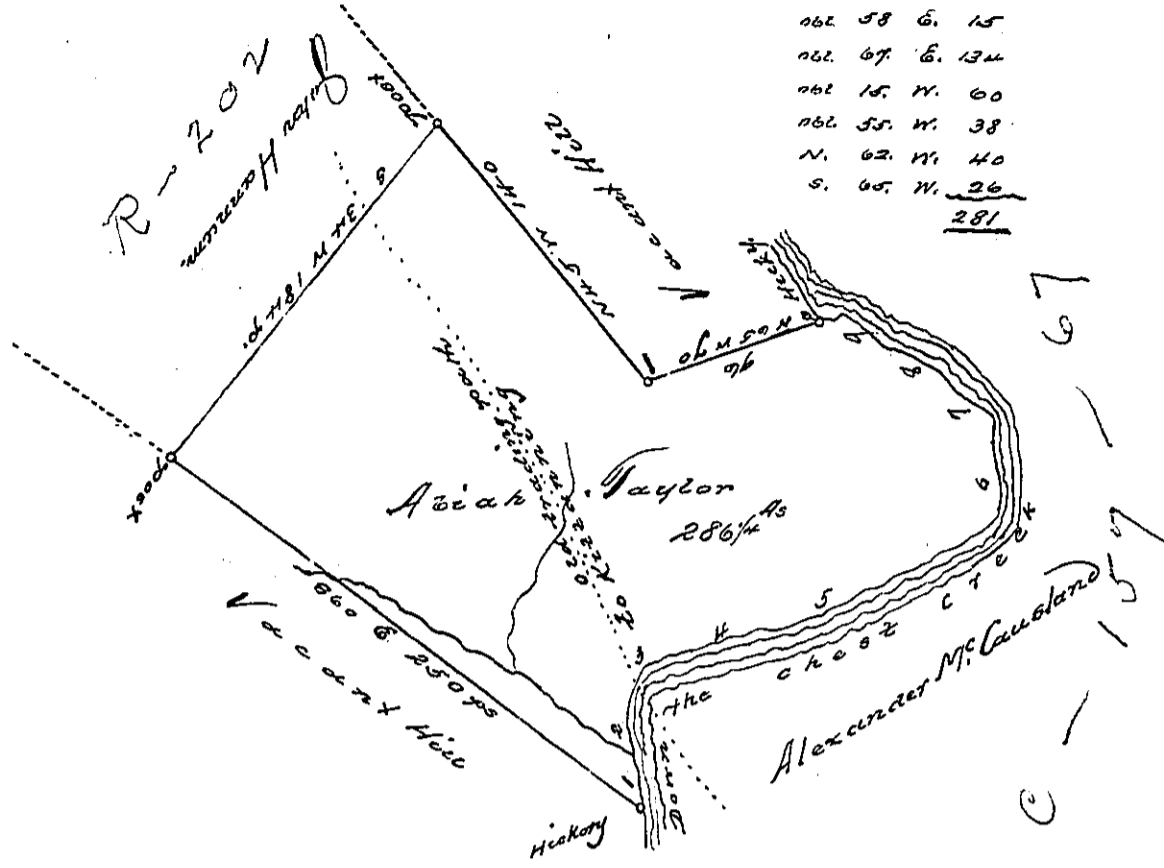


Courses & Distances down the Creek
from the Upper to Lower Hickory

062	20	N.	24
022	h		26
062	44	E.	38
062	58	E.	15
062	67	E.	13 1/2
062	15	N.	60
062	55	N.	38
N.	62	N.	40
S.	65	N.	26
			<u>281</u>



A Draught of a Tract of Land known by the name of the Chestnut Land, Situated on the West side of the Chest Creek where the path from Frankstown to the Returning crosses the said Creek adjoining Lands of John Hannum in the County of Bedford Containing two hundred and eighty six Acres one quarter of an acre and the usual allowance of six per Cent for Roads &c. Surveyed the 21st day of June 1773 for Abiah Taylor in pursuance of a warrant Dated the 06th day of May in the same year

by Thomas Smith D.S.

To John Lukens Esq.
Surveyor General of Pennsylvania

N.B. That part of the Land mentioned in the above warrant which lies on the S or E side of Chest creek was surveyed & returned in 1769 for Alex^r M^o Cauley on an order N^o 1370 dated April 3^o 1769.

IN TESTIMONY that the above is a copy of the original remaining on file in the Department of Internal Affairs of Pennsylvania, made conformably to an Act of Assembly approved the 16th day of February, 1833, I have hereunto set my Hand and caused the Seal of said Department to be affixed at Harrisburg, this third day of May 1898

James W. Latta
Secretary of Internal Affairs.